

EXCITING LOOK AND FEEL

Late last year New Look launched into a stunning refurbishment programme throughout their stores. Aimed at differentiating itself from its competitors and driving like-for-like sales, growth and profitability the “Look and Feel” programme supports their brand pillars of fashion excitement, value and newness which is at the heart of everything they do.



Hills are project managing and providing QS and CDMC services for the project which commenced with six trial stores and then moved straight into a tight programme of refurbishing six stores a week across the UK and Ireland. The modernisation provides a new visual look with stunning internal decoration

and refitting with new equipment, signage, fitting rooms and window displays. Sleek black fascias and chrome signage are softened by the use of trendy wallpaper and retro style fittings.

The stores are being completed in phases, some of which have been completed, and planning for execution of further phases is underway. The phased works will continue well into 2011/2012. As no two stores in an area can be processed at the same time, Hills’ staff are travelling the length and breadth of the country as New Look introduces that “Wow” factor to its stores.



BRISTOL WELCOMES LEE



Lee Barker has joined Hills as Office Director in Bristol. Lee has the benefit of more than 25 years experience within the construction industry in both main contracting and private practice. He has worked on a very

wide variety of projects across the country which range from inner city urban regeneration and environmental improvements, petroleum/oil installations and multi retail outlets to elderly persons accommodation, educational and MOD establishments.

Lee benefits from the ability to relate directly to all members of the professional and construction team with pragmatism and a comprehensive understanding of how best to achieve the client’s requirements. He claims that his ‘grounded’ attitude towards his work is born from his experiences as a dedicated mountaineer; he has climbed extensively throughout the world, including the Greater Himalaya, Russian Caucasus, the Andes and Alaska.

He is looking forward to meeting existing clients and building the business in the Bristol area.

SHOP TILL YOU DROP!

Hills’ retail teams are based in London and Milton Keynes and work for clients throughout the UK and Ireland. It has been a busy year in the retail industry and projects have encompassed both refurbishment, fit-out and new build. Hills have offered quantity surveying, project management and CDMC services to these clients. In addition to New Look, clients include Debenhams, where Hills have been involved with the modernisation of eight department stores as well as acting as CDMC on new stores, modernisations and maintenance projects; Gap and Banana Republic where Hills were appointed to provide contract and tender advice as well as CDMC services for a number of projects; Arcadia, for whom Hills have provided full quantity surveying services and CDMC for new build and refurbishment projects as well as installing Arcadia brands into BHS stores; H&M where we have been involved with new build stores and finally Signet Jewellers for whom we have provided in-house cost management services as well as tender documentation for their subsidiary, Ernest Jones.



FAST-TRACK SCHOOL

Hills are acting as quantity surveyor and project manager in partnership with NPS Group Exeter on the construction of a £6.1 million school for children educated outside mainstream education. The 2,279sm school is being designed and built for Devon County Council on Roundswell Industrial Estate at Barnstaple. It will take 50 children at any one time with a one to one child to teacher ratio. The ground floor will be divided to take two groups of 25 children and the first floor will house offices for social services, childrens services, physiotherapy and similar. The high security building will also have space for the children to learn practical skills, a multi-use games area and car parking.

The project is being fast-tracked in order to meet funding and operational requirements. Hills were briefed in April this year, planning applications were made at the end of August and the contractor is due to start on site in October with a planned completion in October 2011. This will be made possible by partnering with Interserve project Services using an NEC cost-reimbursable form of contract.



'ZERO CARBON IN USE'



Montgomery Primary School in Exeter will be the first 'Zero Carbon in use' school in Devon designed to meet Passivhaus standards. The Passivhaus standard is an international standard developed in Germany and provides a building that meets particularly rigorous levels of energy efficiency. The building will be extremely well insulated in order to ensure it loses the minimum amount of heat from the walls, floor and roof. As a result significantly less heating will be required thus reducing carbon emissions. It will also be as airtight as possible in order to reduce air and heat leakage. To obtain 'Passivhaus' status the building must also have a low level of primary energy consumption, (that is, energy for heating, hot water and electricity). Passivhaus buildings also make use of any waste heat from systems such as lighting and electrical equipment.

This new technology will require the building users to understand how the building works and the importance of managing and minimising energy use. As an all electric school it will have the potential, through Feed in Tariffs, to provide itself with a revenue stream. The objective is that as measured over the full year, the school will generate all its energy requirements from the photovoltaic panels.

The construction of the new 420 place primary school with 26 FTE nursery places will cost £8 million and will be built on the playing fields of the existing school. It is due to open in September 2011 and the fast track programme is made possible because much of the building will be prefabricated.

Hills are working as Post Contract Project Manager for NPS (SW) Ltd as part of Devon County Council's design team.

HOLY CROSS CATHOLIC PRIMARY SCHOOL

This very successful Voluntary Aided school in Fulham is in the trusteeship of the Diocese of Westminster. It is regularly oversubscribed and in September will be admitting 28 reception age pupils for an English/French bi-lingual education in partnership with Ecole Marie d'Orliac. It also has links with schools in France, Ireland and Spain and has for the last three years taught Mandarin. Hills were appointed last year as project managers to assist the Diocese and school through the design and construction of a new 420 place school with a total cost of £15 million. Currently at the pre-planning consultation stage, the preferred design is for buildings around an enclosed courtyard which will be at a lower ground level to minimise noise disruption to neighbours. On one side the façade of the original Victorian school buildings will be retained and on the opposite side more modern buildings will reflect the eclectic nature of the area. In addition to teaching space there will be a large music suite, versatile areas for arts and drama and a dining area/community café which opens on to the colonnaded central courtyard.

A contractor for the design and build project will be appointed by the end of October and the architects, Benson & Forsyth, will be novated over to prepare the detailed design between December and March. Commencement on site is programmed for April. 2011.



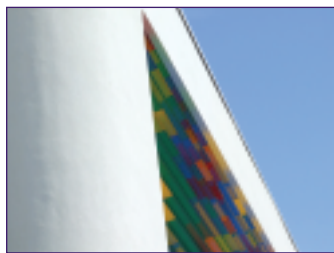
CARDIFF MEDICAL



The team in Cardiff know a thing or two about medical buildings. A five year programme commencing with the construction of the shell and core of a eight storey building at the University Hospital of Wales in Cardiff, is nearing completion and Hills have been there since the beginning. The PET Imaging Centre takes up the ground floor and basement, two further floors are taken up with neuroscience wards.

Floors for renal outpatients, a renal ward, paediatrics and neuroscience theatres complete the picture. There are further projects planned of circa £5 million to reconfigure other departments in the existing hospital once Neurosciences have relocated to the new building.

The Cancer and Genetics Building has just been completed. The stunning brise soleil louvres above the windows represent DNA strands and were "proofed" as accurate by one of the professors. The building contains high specification laboratory space for the School of Medicine's cutting edge research. The two floors are raised on columns above an existing car park area.



Just commenced on site is the £10 million Cochrane Building for Medical Education also on the Heath Park campus. This building will house a library and computer facilities, seminar rooms to support small group teaching, a clinical simulation suite set up exactly like an NHS ward, and state of the art clinical skills facilities.

LIBRARY COMPLETES ON TIME

The new £6.3 million Paignton Library opened to the public on time in September after a 65 week main contract and a four week fit-out contract, both project managed by Hills. Hills have been involved in the project since late 2007 and also acted as Quantity Surveyor.

The building houses numerous agencies including Adult Education, Community Policing, Council Information services, Age Concern and of course the Library service. One of the challenges of the project was to deliver the requirements of these different stakeholders whilst maintaining programme and cost control. The building was partly funded by the National Lottery.



Sailing Home First

Phil Rumbelow and the crew of Xcellent came first again in the IRC Class of the 20th Michelmore's Challenge. They won the Michelmore's Trophy which was presented by Will Michelmore.

POPPY HOMES

A major part of the welfare work of The Royal British Legion is to provide short and long term care for serving and ex-Service people and their dependants in Care Homes and Welfare Break Centres around the country. These are known as Poppy Homes. Hills are acting as project managers, quantity surveyors and CDMC on two projects for The Royal British Legion.

Bennet House in Northern Ireland has a delightful position on the sea front in a quiet part of Portrush with spectacular views of the Causeway Coast and Scottish Isles. Like every Poppy Break Centre, it is exclusively for people of the Service and ex-Service community who are recovering from an illness, bereavement or other life affecting event. The £2m project provides for the complete upgrade of facilities at the Centre and whilst the work is underway, Bennet House has moved to a nearby hotel where they have use of ten ensuite bedrooms as well as a private lounge and dining area overlooking the coast.

Galanos House is a Nursing Home situated on the edge of Southam, a small market town in the heart of the Warwickshire countryside. Here work has commenced on site to add a 30 bed dementia care unit to the Home.





- Hills have supervised two refurbishment projects at Rowcroft Hospice in Torquay. Both the in-patient unit and out-patient services have been upgraded with Hills acting as quantity surveyor and CDMC.
- After 21 years the “new” buildings at Royal Devon and Exeter Hospital are in need of a little tender loving care. As the original building work was to a high standard it has meant that refurbishment is providing excellent value for money for the Trust. Hills supervised work on the Dermatology Unit last year and the Medical Out-Patients this year.
- Alun Owen, Manager in the Cardiff office, was married in the grounds of Groot Constantia, one of the best examples of Cape Dutch architecture in South Africa and producers of one of the world’s most famous wines –lucky man!
- Adam Watts will join the Cardiff office in September to spend his year-out gaining experience with Hills. He will replace Owen Beckett who returns to the University of South West of England for his final year.
- Hills have supervised the design and costing and obtained planning permission for a new £2 million Sixth Form building for Finchley Catholic High School. Funding will be dependant on the results of the autumn Spending Review.
- The team in Cardiff are acting as CDMC for Cardiff University on a rollout of 18 minor works projects as well as acting as CDMC for Swansea Metro University.
- Tom Dodge swam one mile around Burgh Island in the “Around the Island Race” organised and hosted by Burgh Island Hotel.

PRESTIGIOUS AWARD

Ulster Museum has won one of the most prestigious museum prizes in the world - the coveted UK Art Fund Prize. The four shortlisted museums which included the Ashmolean Museum, Blists Hill Victorian Town and the Herbert Art Gallery and Museum went through a rigorous judging process which also involved the public in an on-line vote. The £100,000 prize will be used by the museum to extend knowledge of and engagement with their collections across art, history and science.



Chair of the judges, Kirsty Young, commented that the judges were impressed by the interactive learning spaces on each level of the building which encouraged visitors to touch and explore the exhibits as well as the way in which the museum was reaching out to all parts of the community. The museum also won the top award for the Best Permanent Exhibit in UK museums and Hills are justly proud to have been cost consultants and project managers for the fitting out of the galleries.

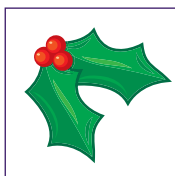
Ulster Museum has welcomed its 500,000 visitor, nine months after re-opening in October last year. Before the revamp it had 200,000 visitors a year.

AND TO END...

Hills are working as contract administrator, quantity surveyor and CDMC for the Westerleigh Group on the remodelling of Torquay Crematorium which they manage. The project involves refurbishment and an extension to provide offices and a new covered entrance as well as a new floral court surrounded by landscaped beds and gardens. Whilst work is being carried out funeral services will take place in a nearby chapel which has been refurbished in preparation for its use.



In Camborne the Penzance team are working for the same client to build a new £1 million crematorium designed by pdp Green Consulting. The project incorporates an 80 seat chapel, a vestry and waiting room, office and support facilities and extensively landscaped grounds. Sustainable technologies include rainwater recycling for grounds maintenance, heat reclamation, passive heating and stack effect cooling.



Once again, Hills will be giving a donation to the NSPCC in lieu of sending Christmas cards this year.

All the staff wish you a Very Happy Christmas and a Successful and Prosperous 2011.



www.wthills.com



2 Farleigh Court, Old Weston Road
Flax Bourton BRISTOL BS48 1UR
Tel: 01275 464620 Fax: 01275 464779
Email: bristol@wthills.com

2 Cathedral Road
CARDIFF CF11 9RZ
Tel: 02920 220438 Fax: 02920 227274
Email: cardiff@wthills.com

Woolwich House
43 George Street, CROYDON CR0 1LB
Tel: 020 8681 7761 Fax: 020 8688 9051
Email: london@wthills.com

Pole House, Old Ide Lane,
Ide, EXETER EX2 9RY
Tel: 01392 218010 Fax: 01392 498205
Email: exeter@wthills.com

The Old Court House, 20 Simpson Road, Fenny
Stratford, MILTON KEYNES MK2 2DD
Tel: 01908 634900 Fax: 01908 634901
Email: miltonkeynes@wthills.com

A Edwin Bryant + Associates
13-14 Bread Street, PENZANCE TR18 2EG
Tel: 01736 361199 Fax: 01736 351557
Email: penzance@edwinbryant.co.uk

1 Palk Street,
TORQUAY TQ2 5EL
Tel: 01803 296363 Fax: 01803 214616
Email: torquay@wthills.com